

ehB
RESIDENTIAL

Your Property - Our Business



 **BRITISH** **GOLD WINNER**

20, Spring Pool, Warwick

£995 Per Month



Available December 2025 This modern two double bedroom ground floor apartment situated within this highly regarded and well maintained development close to the town centre.

Car Port and Second Parking Space.

Communal Entrance Hall

Sitting Room

14'6" x 13'7" (4.42 x 4.14)

Front door. Entry system. Radiator. Cable T.V. and telephone point. Telephone point. T.V. aerial point. T.V. Stand. Sealed unit double glazed window to rear. Laminate flooring. Door to inner hall. Opening to :

Kitchen

6'11" x 12'0" max (2.11 x 3.66 max)

Modern kitchen units. Inset single drainer

stainless steel sink unit with mixer tap attachment and cupboard space under. Four base units. Natural woodblock work surfaces and walls tiled around the splash areas. Double and two single wall units with under lighting. Woodblock breakfast bar. Beko fridge/freezer, Zanussi electric oven with hob and grill pan and stainless steel chimney cooker hood over. LG washer/dryer, Zanussi dishwasher. Wall mounted Vaillant Ecotecpro combination gas fired central heating boiler.



Built-in full height shelved storage cupboard.
Potterton digital central heating programmer.
Sealed unit double glazed window to front.

Inner Hall

Radiator.

Bedroom One

9'0" x 9'3" (2.74 x 2.82)

Built-in double wardrobe with sliding doors.
Radiator. Sealed unit double glazed window to front.

Bedroom Two

9'0" x 9'4" (2.74 x 2.84)

Radiator. Sealed unit double glazed window to rear.

Bathroom

Modern white suite. Panelled bath with Triton T80xr shower over. Semi-inset wash hand basin with cupboard under. Close coupled w.c. Radiator. Sealed unit double glazed windows.

Outside

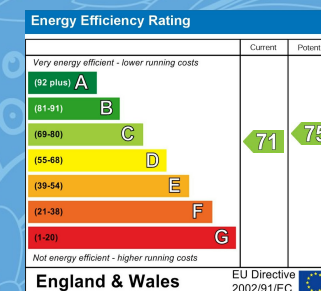
Covered car port plus additional car standing space.
Particularly well maintained communal gardens.

Your Property - Our Business

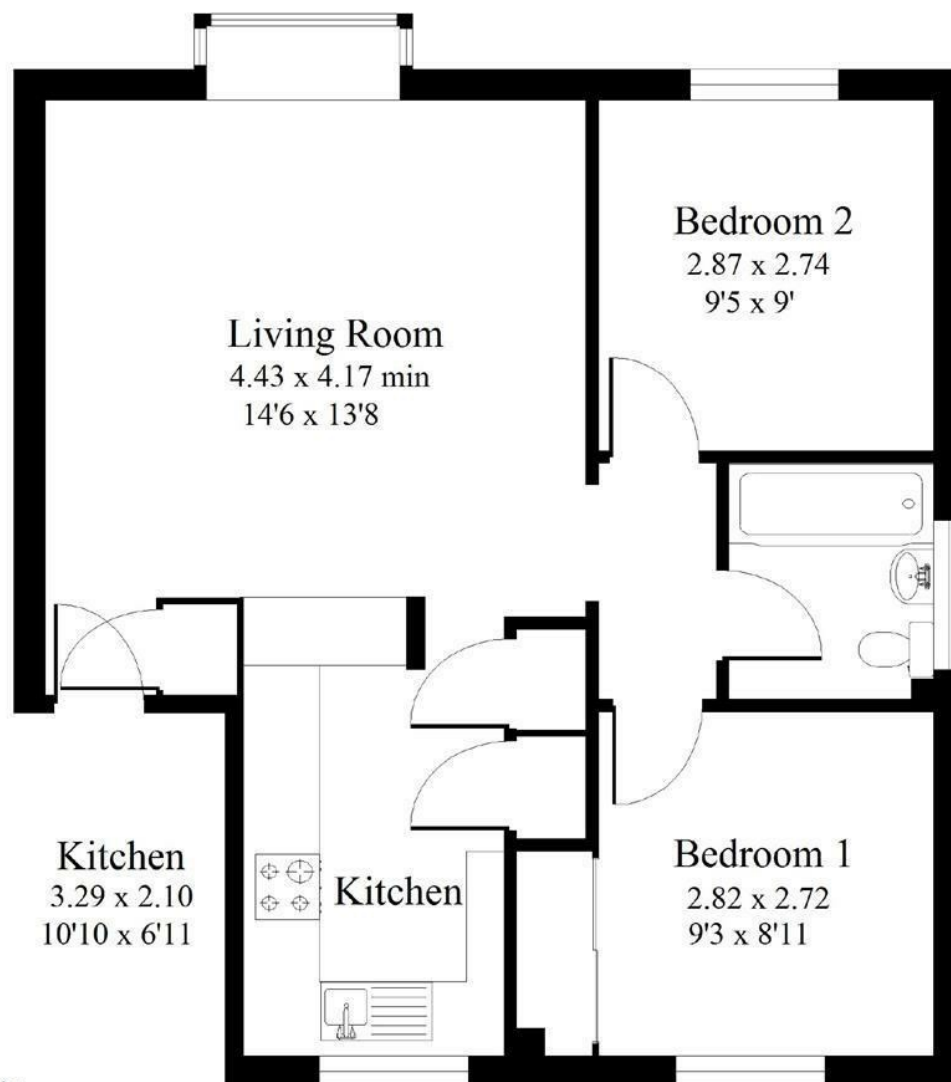
- Residential Estate Agents •
- Lettings and Property Managers •
- Land and New Homes Agents •

Warwick Office
17-19 Jury Street
Warwick
CV34 4EL

☎ 01926 499540 🌐 ehbresidential.com



Also at: Leamington Spa, Somerset House,
Clarendon Place, Royal Leamington Spa CV32 5QN



Floor plans are for illustration
purposes and are not to scale.

Plan Your Move Ltd.

© 2010 01926 409428

IMPORTANT NOTICE ehB Residential for themselves and for the Vendors of this property, whose agents they are, give notice that:- 1. The particulars are intended to give a fair and substantially correct overall description for the guidance of intending purchasers and do not constitute part of an offer or contract. Prospective purchasers and lessees ought to seek their own professional advice. 2. All descriptions, dimensions, areas, reference to condition and necessary permissions for use and occupation and other details are given in good faith, and are believed to be correct, but any intending purchasers should not rely on them as statements or representations of fact, but must satisfy themselves by inspection or otherwise as to the correctness of each of them. 3. No person in the employment of ehB Residential has any authority to make or give any representations or warranty whatever in relation to this property on behalf of ehB Residential, nor enter into any contract on behalf of the Vendor. 4. No responsibility can be accepted for any expenses incurred by intending purchasers in inspecting properties which have been sold, let or withdrawn. Measurement and other information. All measurements are approximate. While we endeavour to make our sales particulars accurate and reliable, if there is any point which is of particular importance to you, please contact this office and we will be pleased to check the information for you, particularly if contemplating travelling some distance to view the properties. 5. The agents will require identity documentation and evidence of address before entering into any transaction under money laundering regulations 2007.